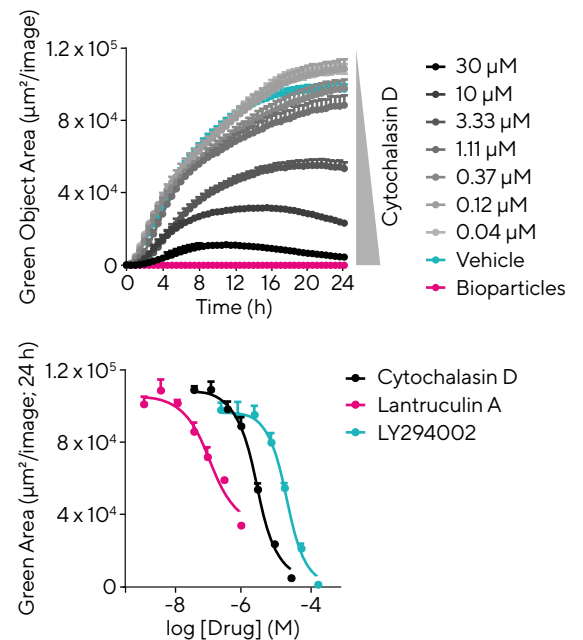
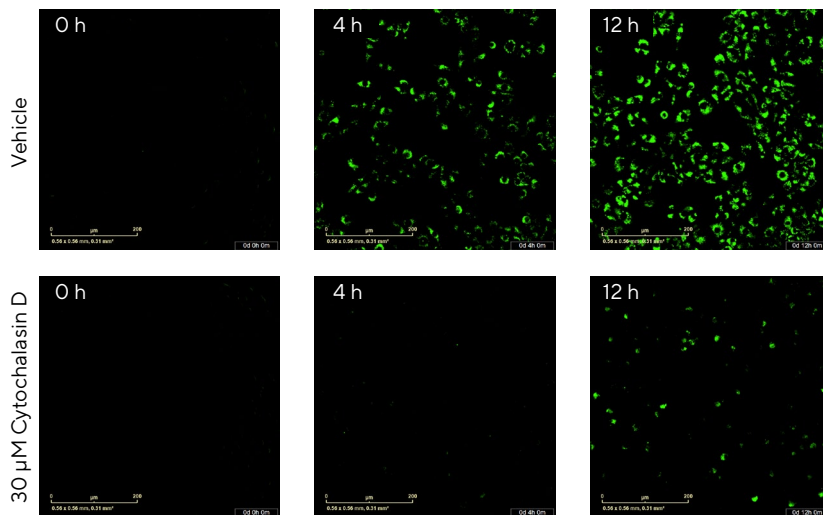


Phagocytosis

pHrodo® Bioparticles® for Incucyte® are pH-sensitive conjugated probes specifically formulated for analysis of the internalization of bacterial Gram-positive, Gram-negative or yeast-derived bioparticles by immune cells.

- Monitor phagocytosis in real-time with simple mix-and-read 96- and 384-well protocols
- Validate phagocytosis with time-lapse images and movies
- Study the effect of treatments on full time course phagocytosis profiles

Application Spotlight: Phagocytosis of Bioparticles®



J774A.1 murine macrophages phagocytosing pHrodo® Green *E. coli* Bioparticles® for Incucyte® in the presence of inhibitors. Time-lapse visualization of cytochalasin D inhibition of Bioparticle® phagocytosis compared to vehicle over 12 h. Time course also shown for cytochalasin D inhibition. Concentration-response curves at 24 h compare inhibition of phagocytosis by cytochalasin D, lantruculin A, and LY294002.

Ordering Information

Product	Description	Cat. No.	Instrument Compatibility
pHrodo® Bioparticles® Sterile fluorogenic reagents ideally suited to a simple mix-and-read, real-time live cell quantification of phagocytosis.			
pHrodo® Red <i>E. coli</i> Bioparticles® for Incucyte®	One vial: 2 mg	4615	SX5 (configured with Green/Red Optical Module), S3, SX1
pHrodo® Green <i>E. coli</i> Bioparticles® for Incucyte®	One vial: 2 mg	4616	SX5, S3, SX1
pHrodo® Red Zymosan Bioparticles® for Incucyte®	One vial: 1 mg	4617	SX5 (configured with Green/Red Optical Module), S3, SX1
pHrodo® Green Zymosan Bioparticles® for Incucyte®	One vial: 1 mg	4618	SX5, S3, SX1
pHrodo® Red <i>S. aureus</i> Bioparticles® for Incucyte®	One vial: 2 mg	4619	SX5 (configured with Green/Red Optical Module), S3, SX1
pHrodo® Green <i>S. aureus</i> Bioparticles® for Incucyte®	One vial: 2 mg	4620	SX5, S3, SX1