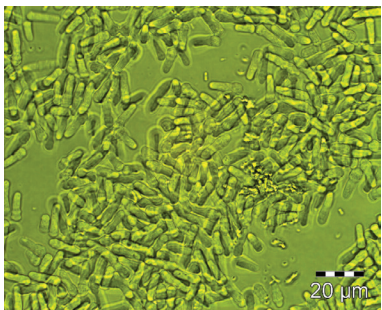


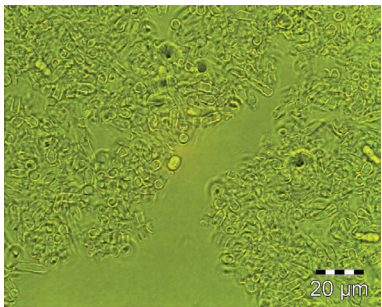
# Materials Processing Data Sheet

## Microfluidizer® Processor Laboratory Results

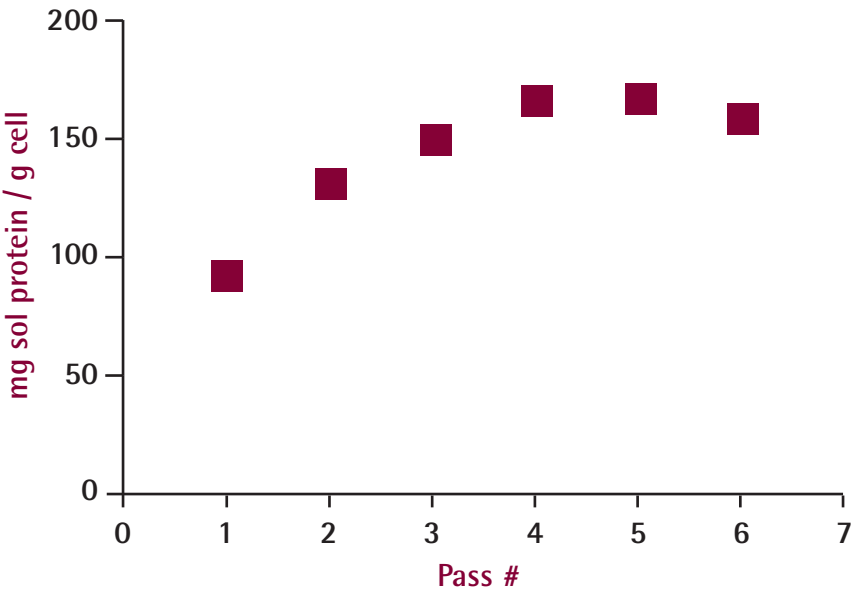
Industry:	Biotechnology
Product:	S. pombe yeast cells dispersed to 50 wt% in buffer solution.
Test Objective:	Determine the optimum conditions for achieving maximum cell lysis
Processor:	M-110EH-30
Number of passes:	5
Process Pressure:	30,000 psi



Before Processing



After 5 Passes



### Summary of Results:

Virtually all of the cells in both formulations appear to be lysed after 5 passes through the Microfluidizer processor.

# Materials Processing Data Sheet

## HC-2000 GMP Pneumatic

Pressure Range 250-2,000 psi

## HC-5000 GMP Pneumatic

Pressure Range 500-5,000 psi

The HC-2000 is our lightweight, easy to use, low pressure homogenizer. With sanitary fittings and 300 series stainless steel parts, processing with the HC-2000 meets GMP requirements. The HC-2000 is suitable for batch and continuous processing with flowrates to 2 liters/minute. The HC-5000 is identical to the HC-2000 but with higher pressure capabilities (to 5,000 psi) and flow rates to 950 ml/minute.

## HC-8000 Sanitary Pneumatic

Pressure Range 1,000-8,000 psi

The HC-8000 complies with sanitary standards to meet demanding product specifications and tight quality control. This unit employs a flow-through, sanitary pressure transducer with digital display and generates liquid pressures up to 8,000 psi and flowrates to 1 liter/minute.

## M-110S Small Volume Pneumatic

Pressure Range 3,000-23,000 psi

The M-110S is an air-powered unit designed to process smaller sample volumes than the other Microfluidizer processors with greater product recovery. For samples as small as 14 ml (with >12ml recovery) up to continuous operation.

## M-110Y High Pressure Pneumatic

Pressure Range 3,000-23,000 psi

The M-110Y provides the highest operating pressure of our laboratory units. It is specifically designed for applications that require optimum pressure, such as cell rupture. The M-110Y is ideally suited for improving product yield and minimizing downtime.

## M-110P Electric "Plug and Play"

Pressure Range 2,000-30,000 psi

The M-110P produces a flow rate range of 110-155 ml/min at any process pressure. Powered by a standard 20 amp, single phase "household" electrical outlet, it requires no compressed air and no hydraulic cooling water. It incorporates a PLC for all on-board system functions.

## M-110EH-30 Electric-Hydraulic

Pressure Range 2,500 - 30,000 psi

The M-110EH is specifically designed for those customers that prefer an electrically-driven unit over a pneumatically-driven one. The unit reaches pressures as high as 30,000 psi and is mounted on locking casters for mobility.

## M-140K High Pressure Electric-Hydraulic

Pressure Range 8,000 - 40,000 psi

The M-140K is built to sustain prolonged high pressure demands and provide users with the opportunity to create new formulations, and improve existing products. The unit reaches pressures as high as 40,000 psi and is mounted on locking casters for mobility.

## M-700 Series

Pressure Range to 40,000 psi

The M-700 Series offers pilot and production performance levels with specific features amenable to industrial applications, including coatings, waxes, inks, pigments, sealants, etc. The units are available in 15, 25, and 50 horsepower models, and can be fitted with 1 or 2 intensifier pumps that can be operated with independent product streams and flow rates.

## M-610 Custom Designed Electric-Hydraulic Production

Pressure Range to 40,000 psi

The M-610 Series Production Microfluidizer processor is capable of flowrates to 18 gpm and can process samples from one gallon to continuous operation. These custom built units employ an electric/hydraulic intensifier pump which can be designed to generate process stream pressures up to 40,000 psi.



HC-8000



M-700



M-710

